



Safe storage of tanks with liquids and fuels.

DISMANTLING

BMC

Insulated monobloc boxes for storing tanks with used fluids.



Insulation

INSULATION WITH 30 MM PANELS



Safety

INTEGRATED CONTAINMENT BASIN



Robustness

LOAD CAPACITY 600 KG/M², IDEAL FOR OUTDOOR

Spill protection

Organization and cleanliness

Safety



CONTAINMENT BASIN WITH NON-SLIP GRID



Recommended pairing with optional level monitoring system, equipped with LED display and audiovisual alarm for real-time tank level control (not included).



BMC 2



BMC 4



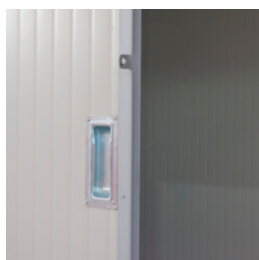
BMC 5



← 2400 mm →

← 4000 mm →

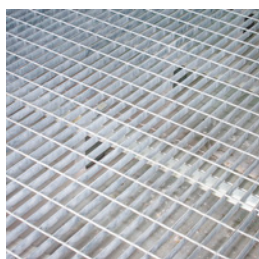
← 5000 mm →



Door with padlock latch



Ventilation grilles



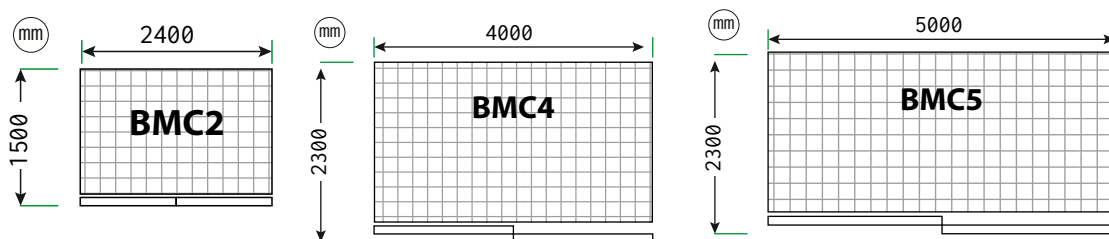
Grated floor for spill collection



Prepared for pipe and wiring passage



LED display for level control (optional)



		BMC2 125085100	BMC4 125086100	BMC5 125085900	
Payload		600	600	600	Kg/m ²
Capacity	Containment basin	500	1200	1500	L
Dimensions		2400 x 1500 x h 2400	4000 x 2300 x h 2400	5000 x 2300 h.2400	mm